



FOUNDATION & STRUCTURE

RCC Framed structure.



WALLS & FINISHING

External walls with 6" solid concrete blocks and internal walls with 4" solid concrete blocks



DOORS

Main door with teak wood frame and others non-teak wood frame with commercial flush shutters/molded doors.

WINDOWS

Aluminum 2 or 3 track with glass panels and with MS safety grills.



FLOORING

Vitrified tiles in Hall & Dining, Others ceramic tiles. Ceramic tiles for Toilet and wash. Cement flooring in drive ways and parking.



ELECTRICAL

Concealed copper wiring and modular switches of standard equivalent.

Specifications



WATER SUPPLY

Adequate usage of a water supply through bore well and overhead tanks.



LIFT

One with 6 passengers capacity leading to all floors (Nikon or Hyper or Surya or equivalent)



KITCHEN

Black Granite Cooking platform, 2 heights ceramic tiles dado, built in stainless steel sink and provision for exhaust fan.



TOILETS

Ceramic Glazed tiles dado up to 7' height with standard CP fittings CERA or ESS or equivalent.



PLASTERING

Double coat sponge finish for external walls and neeru finish for internal walls.



PAINTING

Internal walls and ceiling Altech with OBD. External walls cement finish all doors and windows with Enamel paint.

NEAREST LAND MARKS

- 1.2 kms Hebbagudi Metro Station - 5 Mins
- 2.0 kms D' Mart - 7 Mins
- 3.5 kms Elevated 4 Lane Express Way Flyover - 10 Mins
- 1.0 kms 6 Lane Bangalore - Hosur Main Road (NH-7_ - 4 Mins
- 3.50 kms Infosys, HP, Velankani, TCS, HIL and Timken - 10 Mins
- 2 kms ICICI, HDFC, Axis Bank and Indian Bank, Punjab National Banks - 7 Mins
- 2.50 Kms Symbiosis and PES University College - 10 Mins
- 1.50 Kms Chirst and Treamis World School, National Public School - 5 Mins
- 2 Kms Narayana Hrudayalaya, Vimalaya Hospital - 5 Mins

EDUCATION INSTITUTIONS

- National Public School
- Royal Public School
- SFS ACADEMY
- JSP School
- Delhi Public School
- Vidya Vahini Public School
- Paradise Residential School
- Acts Secondary School BRS Global Center
- Suryodaya Pre University College

HOSPITAL

- Narayana Hrudayalaya
- Bhoomika Multi Speciality Hospital
- Swamy Trauma Care
- Sparsh Hospital & Vimalaya Hospital
- Srinidhi Hospital

Location Map

(not to scale)



PREVIOUS PROJECTS

1. HABULUS ELITE
2. HABULUS ELITE - II
3. HABULUS RESIDENCY
4. HABULUS SUNSHINE
5. HABULUS HARMONY



Scan for Google Location



HABULUS HOMES PVT LTD

Cell No: +91 99160 63634
+91 97421 09124
+91 99858 95559

Site address

Sunrise Apartment

Sy.no: 88/6, Kammasandra Main Road, Kammasandra Village, Attibele, Hobli, Anekal Taluk, Bangalore Urban District, Bangalore - 560 100.

Note: This brochure is a conceptual presentation and not a legal offering. The promoter reserve the right make changes in plans, specifications and elevation as deemed fit.

designed by Barma Ad Systems +91 98664 01362 +91 8897384503 18/06/23



HABULUS GROUPS

Sunrise Apartment



A project by
HABULUS HOMES PVT LTD



Sunrise Apartment

Typical Floor Plan

Flat No.	1	2	3
Area in sft.	1404 Sft	1035 Sft	1395 Sft
Facing	East	East	East



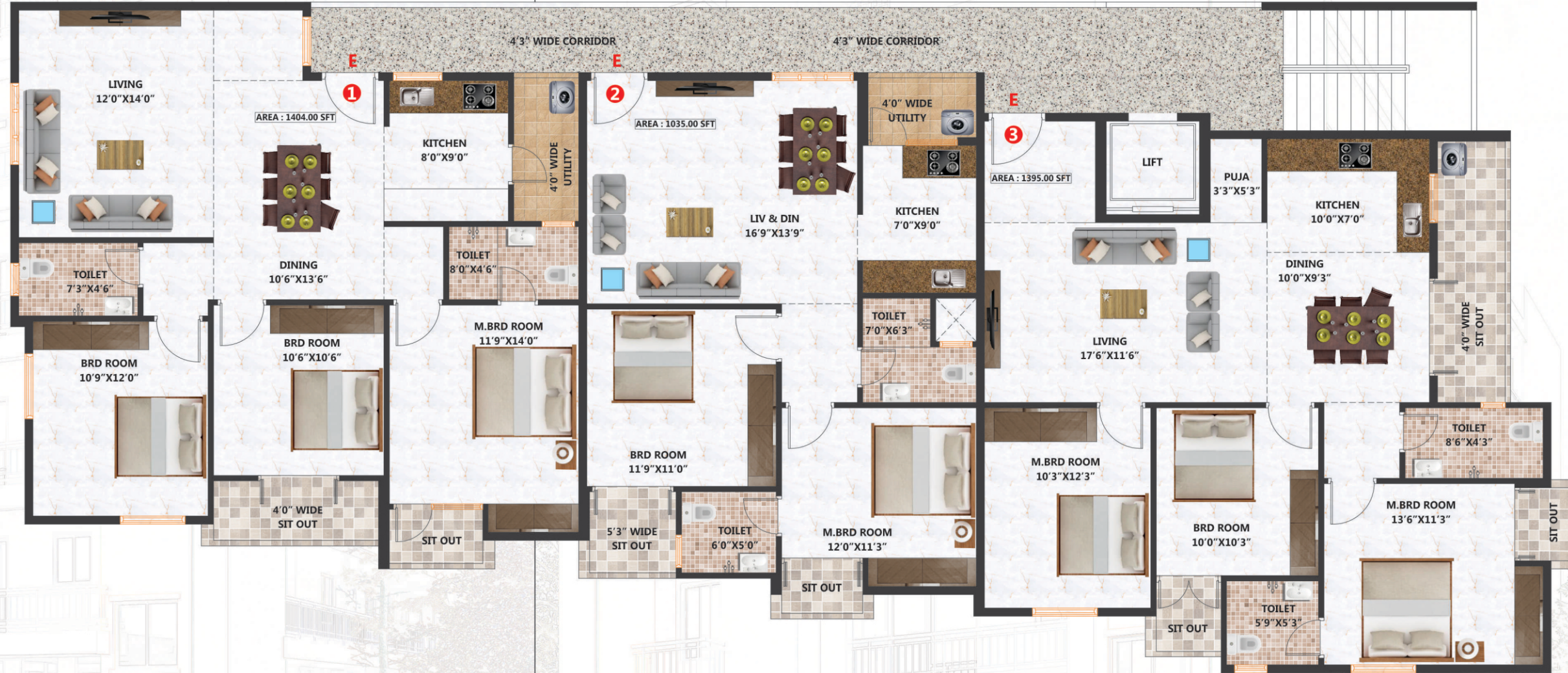
HIGHLIGHTS OF THE PROJECT

Superb Connectivity, which has a signal free approach from major shopping malls, Star Hotels and IT Companies etc., Ideal Location with good connectivity on all sides of the Gated Community.

Surrounded by super Luxury Estates, Shopping Malls, Multiplexes, IT Companies, and many more. Earthquake resistance structure catering to seismic zone V

AMENITIES

-  CCTV Camera
-  Rain Water Harvesting
-  Lift
-  Power Backup
-  24x7 Security
-  Landscaping



ROAD

OVERVIEW

Superior quality, attention to detail and perfection are the standards that **HABULUS HOMES PVT LTD** demands throughout its projects. One can sense the **SUNRISE APARTMENT** Brand in every aspect of the Properties that bear its name - from design driven, cutting edge facades created in collaboration with the best architects, to the flawless interiors-no details is overlooked.

With each of its Properties, **SUNRISE APARTMENT** continues to raise the bar of super luxury living consistently.

LIVING STANDARDS

... the grand way of living

One aspires to live the way You dreams and at **SUNRISE APARTMENT** Apartments we strive to convert your dreams in to reality. At our new creation, we have an elegant architecture treat will please your eyes and spacious apartment that will take care of your comfort. The amenities are also specially designed to delight residents with fresh ideas that bring joy to living.

CLASSIC

... tonly know to the connoisseur.

The grandeur, quality and convenience of **HABULUS HOMES PVT LTD** make it a living heaven for connoisseurs who wish their homes be a class above the rest. We have designed our new project **SUNRISE APARTMENT** Apartments to bring you pride, joy and gratification that you always aspired. We present you a magnificence which is an epitome of class, quality and luxury.

