



accent  
**Kruthika**  
NILAYA

1 & 2 BHK LUXURY APARTMENT

@ KUDLU, HOSUR ROAD,  
BANGALORE



accent homez

accent  
**Kruthika**  
NILAYA  
1 & 2 BHK LUXURY APARTMENT

*Your Dream is ...  
Our Creative Home*



## OVERVIEW

Superior quality, attention to detail and perfection are the standards that ACCENT HOMEZ demands throughout its projects. One can sense the ACCENT HOMEZ Brand in every aspect of the properties that bear its name - from the design driven, cutting edge facades created in collaboration with the best architects, to the flawless interiors - no detail is overlooked.

With each of its properties, ACCENT HOMEZ continues to raise the bar of super luxury living consistently.

## LIVING STANDARDS ...the grand way of living!

One aspires to live the way he dreams and at **Accent Kruthika Nilaya Apartments** we strive to convert your dreams into reality. At our new creation, we have an elegant architecture that will please your eyes and spacious apartments that will take care of your comfort. The amenities are also specially designed to delight residents with fresh ideas that bring joy to living.

## CLASSIC

...only known to the connoisseur!

The grandeur, quality and convenience of Accent Homez make it a living heaven for connoisseurs who wish their homes be a class above the rest. We have designed our new project **Accent Kruthika Nilaya Apartments** to bring you pride, joy and gratification that you always aspired. We present you a magnificence which is an epitome of class, quality and luxury!





**BBMP  
Approved**

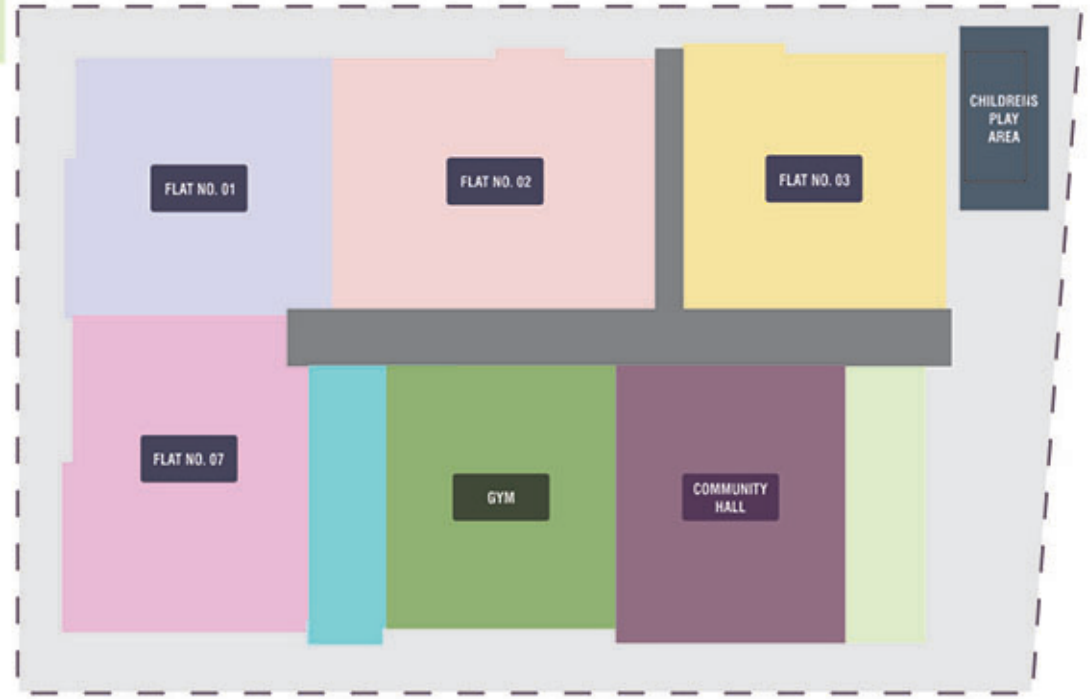


TYPICAL FLOOR PLAN



**MASTER PLAN - FLOORS**

**MASTER PLAN - AMENITIES**





## HIGHLIGHTS OF THE PROJECT

Superb Connectivity, which has a signal free approach from major shopping malls, Star Hotels and IT Companies etc.,

Ideal Location with good connectivity on all sides of the Kruthika Nilaya Apartment.

Surrounded by Super Luxury Estates, Shopping malls, multiplexes, IT Companies, and many more.

Earthquake resistance structure catering to seismic zone V.

## NEAREST LAND MARKS

- 4 Lane Express way Flyover - 1 Km
- 6 Lane Bangalore - Hosur Main Road (NH-7) 1 Km
- Infosys, HP, Velankani, TCS, HLL and Timken 5 Kms
- Ibis Hotel & Kyes Kotel - 2 Kms
- Wipro Technologies at Sarjapur Road - 5 Kms.
- Silk Board - 5 Kms
- H S R Layout - 3.5 Kms
- Amurutha Engineer College - 3 Kms
- All Nationalized Banks within a Kms
- Chaithanya School Adjacent to the Project
- Narayana Techno School - 2 Kms

## AMENITIES

- Gym
- Community Hall
- Children's Play Area
- CCTV Camera
- 24 X 7 Security
- Power Backup
- Intercom



# SPECIFICATIONS

- Structure** : RCC framed structure.
- Walls & Finishing** : External walls with 6" solid concrete blocks and internal walls with 4" solid concrete blocks
- Plastering** : Double coat sponge finish for external walls and neeru finish for internal walls.
- Doors** : Main door with teak wood frame, and others non-teak wood frame with commercial flush shutters / molded doors.
- Windows** : Alluminum 2 or 3 track with glass panels and with MS safety grills.
- Flooring** : Vitrified tiles in Hall & Dinning, Others ceramic tiles for Toilet and Wash. Cement flooring in drive ways and parking.
- Kitchen** : Black Granite cooking platform, 2' height ceramic tiles dado, built in stainless steel sink and provision for exhaust fan.
- Toilets** : Ceramic Glazed tiles dado up to 7' height, with standard CP fittings CERA or ESS or equivalent.
- Painting** : Internal walls and ceiling Altech with OBD. External walls cement finish, all doors and windows with Enamel paint.
- Electrification** : Concealed copper wiring and modular switches of standard or equivalent
- Water Supply** : Adequate usage of a water supply through bore well and overhead tanks.
- Lift** : One with 6 passengers capacity leading to all floors (Nikon or Hyper or Surya or equivalent)



accent  
**Kruthika**  
NILAYA





# LOCATION MAP

Not to scale



Note : This brochure is only a conceptual presentation of the project & not a legal offering.

SITE OFFICE :



## accent homez

### ACCENT KRUTHIKA NILAYA

Sy. No. 35/2, 1st Main Road, Near Sri Chaithanya School Road,  
Kudlu, Hosur Road, Bangalore 560 068

Web: [www.accenthomez.com](http://www.accenthomez.com) Email: [vinodcivil141@gmail.com](mailto:vinodcivil141@gmail.com)

Contact: +91 99160 63634 / 9900488008

Architect by :

Satish Babu Associates  
Mob. 9986030139  
Bangalore

